

Capsule Inspection Machine



VISICAPS 3-M

Medium output Capsule inspection machine

- High output - up to 260 000 caps./h
- High quality sorting solutions for capsules
- High level of operator autonomy

PRODITEC

Unparalleled inspection with no-compromise precision

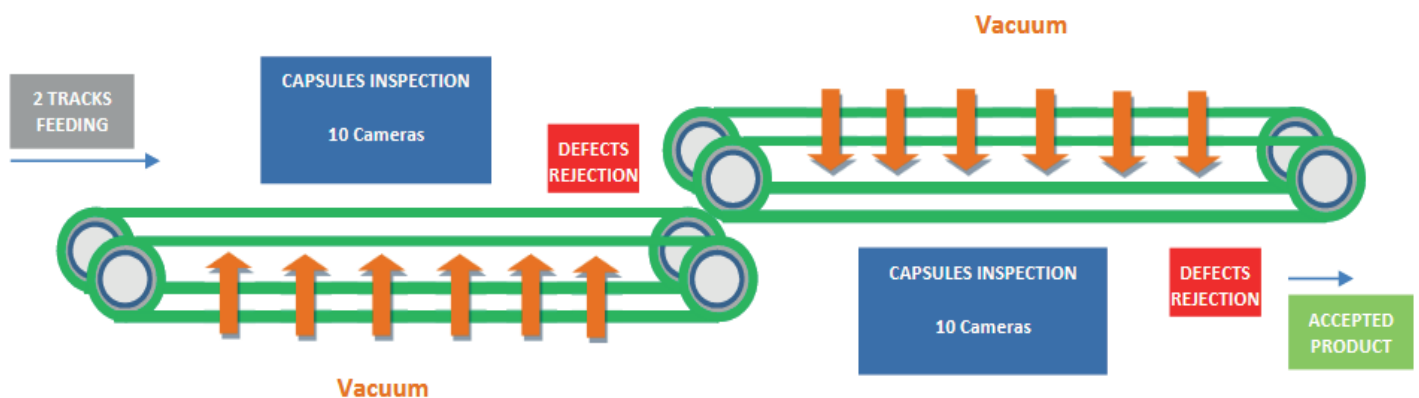
A dedicated inspection system for capsules

- 10 new generation colour cameras per track with reflection-free lighting and optimised inspection angles for capsules
- Custom panoramic processing for capsule cylinders
- Total of 20 sensors for capsules sort



2 High speed vacuum tracks dedicated to capsules

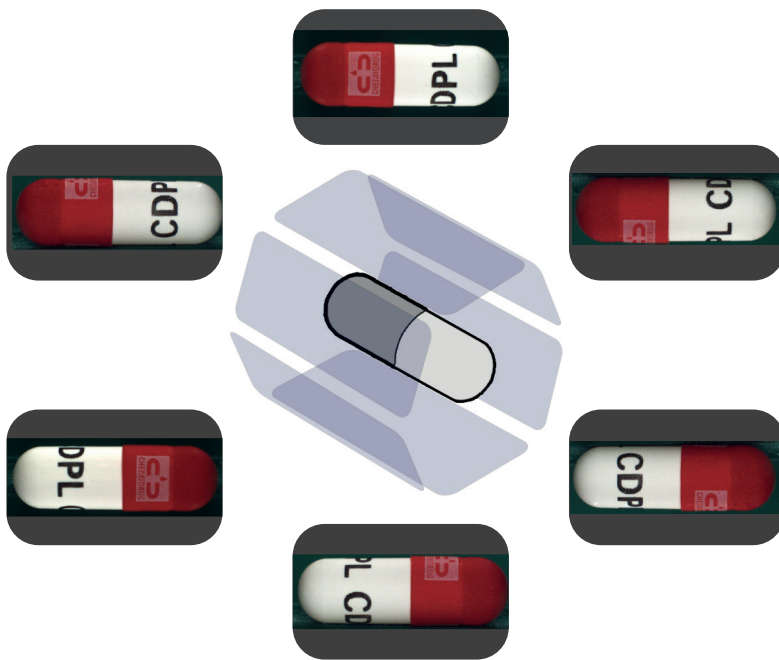
- Sizes from #0 to #5 for capsules
- Static-free tooling
- Anti-jamming feeding system



20 years of experience in feeding insuring machine use on capsule shape range

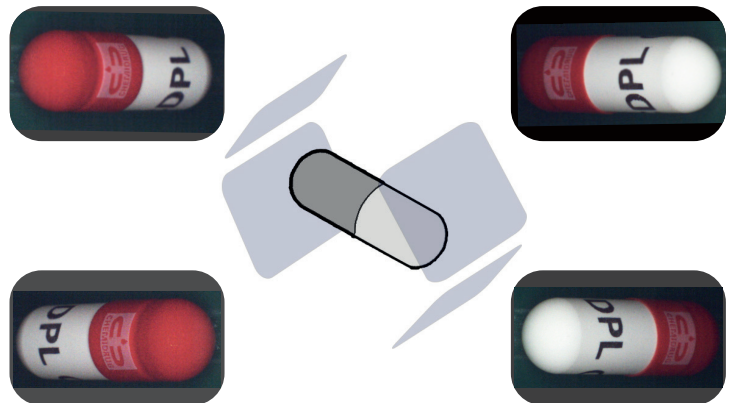
Capsules Inspection

Multi-angle camera system and reflection-free lighting for high-quality inspection



Our multi-view system guarantees full 360° inspection thanks to 10 overlapped views covering both the cylindrical parts and the domes

Combined result of both upper and lower vision stations



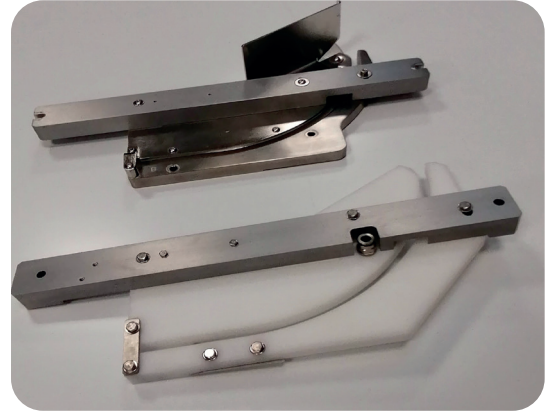
Conventional direct lighting



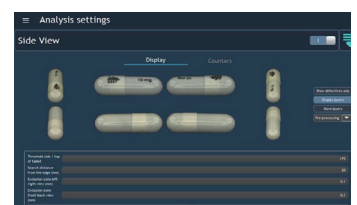
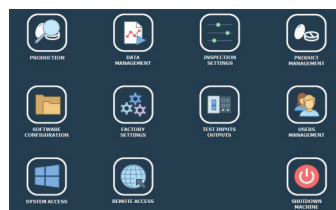
Specific reflection-free lighting

Reflection-free lighting ensures the perfect environment for defect analysis

- Full set of parts covering multiple capsule formats
- Plug and play tooling
- Simple to use
- Low volume storage



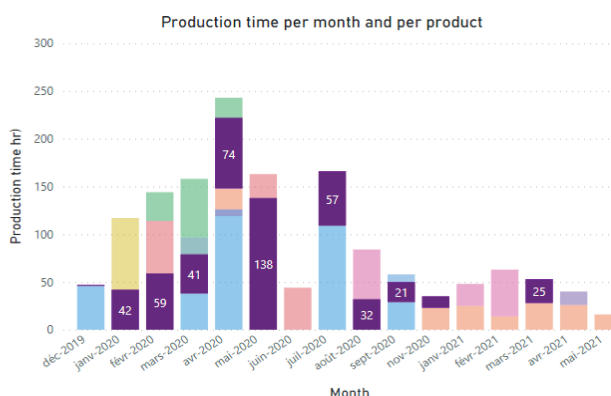
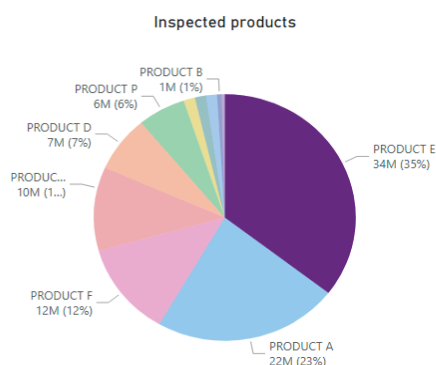
- Set-up in 30 minutes
- Interactive information
- Intuitive configuration
- Automatic learning system
- Fast template-based set-up
- Limited number of parameters for simplicity



SERVICE SUPPORT MONITORING FOR INDUSTRY 4.0

- Service support at the Industry 4.0 level with a specific application updated at your convenience (monthly, quarterly, annually)
- Clear understanding of your production data with the expertise of our engineers

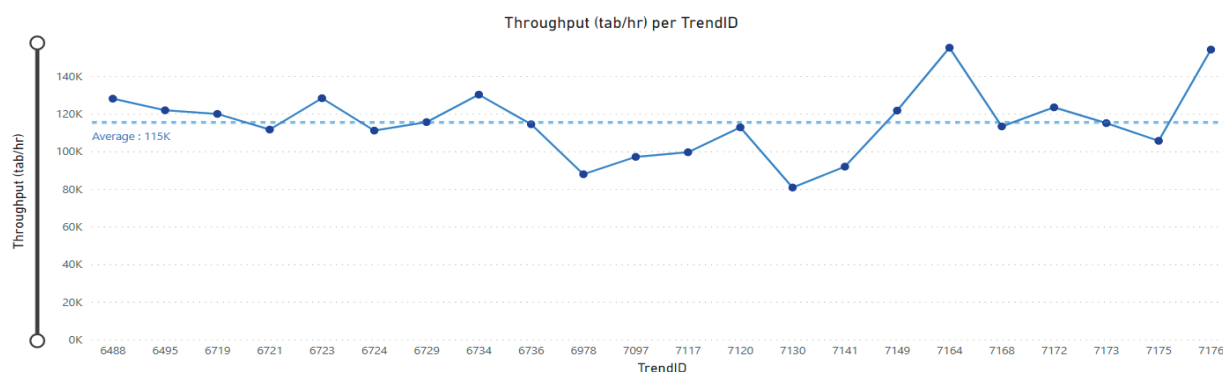
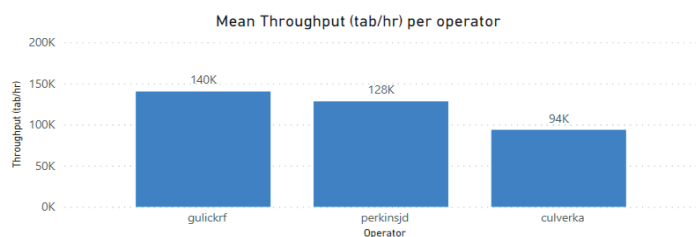
PRODITEC
AUTOMATIC INSPECTION MACHINES



PRODITEC
AUTOMATIC INSPECTION MACHINES

Period

Product, Batch



CFR 21 Part 11 Compliant

- Audit trail report
- Security log
- Recipe audit
- Data integrity
- Batch report
- Users management

Connectivity

- Network connection
- OPC
- Active directory

Outputs

Capsules

- #5 : up to 260.000 caps./h
- #4 : up to 240.000 caps./h
- #3 : up to 220.000 caps./h
- #2 : up to 200.000 caps./h
- #1 : up to 180.000 caps./h
- #0 : up to 160.000 caps./h
- #00: up to 140.000 caps./h

